



DOTRubik™
— ASSOCIATES —

C O M P A N Y P R O F I L E

PHONE: +234 (01)291 6949 MOBILE: + 234(0)818 317 9275

EMAIL: INFO@DOTRUBIKPROJECTS.COM

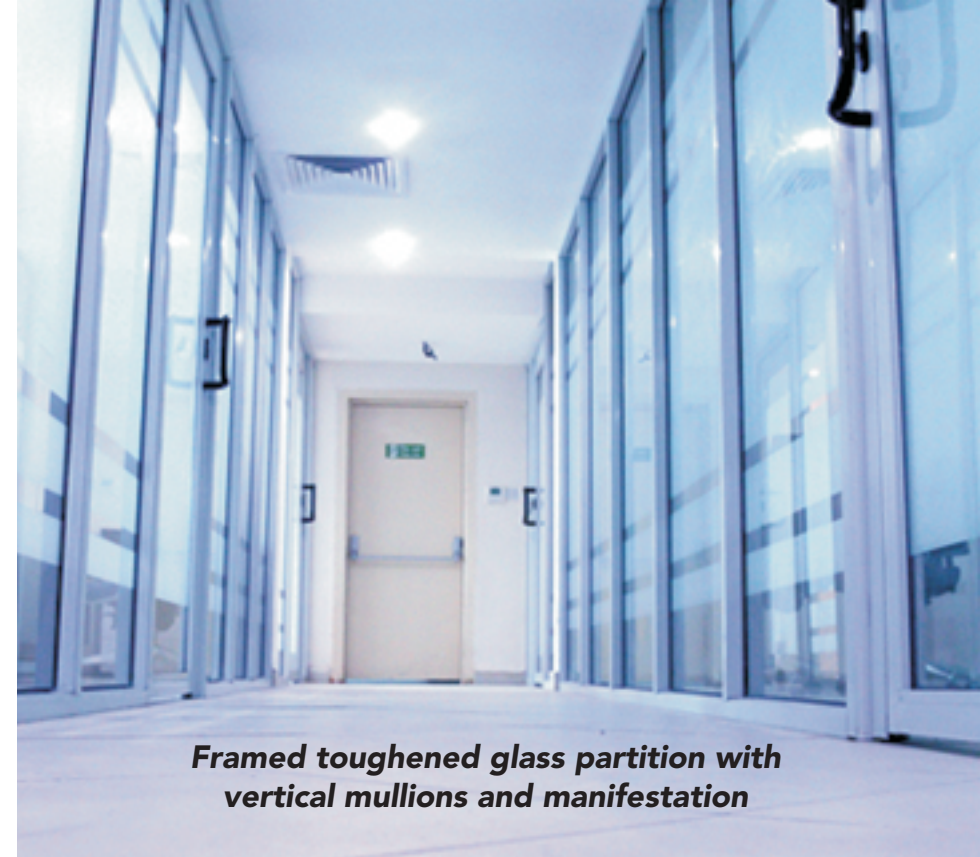
Innovation at work...



light recess with false wall cladding



wallart on restroom door



Framed toughened glass partition with vertical mullions and manifestation



Double glazing with manual knob control for integral blinds (tilt & tip only)



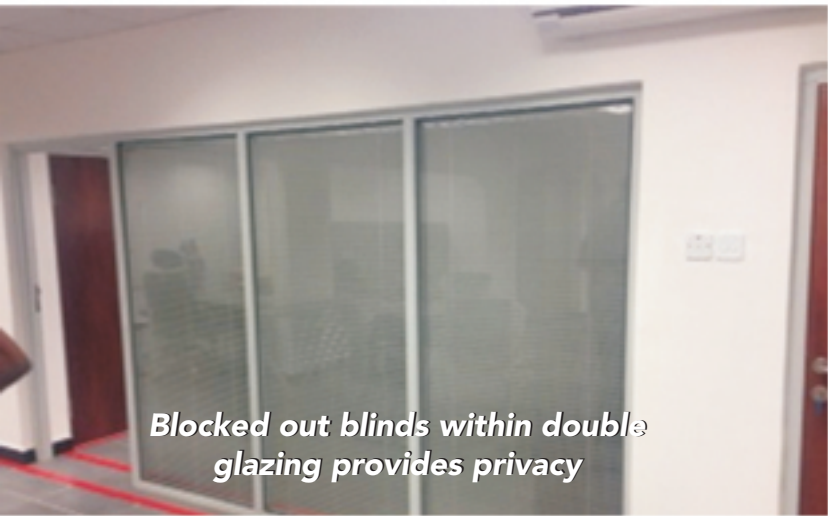
Open plan office before interior Fit-out



phone rooms



Slimline Wood finish door frame with 44mm thick MFC door



Blocked out blinds within double glazing provides privacy



Opened blinds within double glazing allows visibility



Frameless Single glazing with manifestation



Drywall partition constructed with built in coffee point cabinet in office

FACTORS WE CONSIDER

TIME | QUALITY | & BUDGET

CONTENTS

- 04** About Us
- 05** Organization Executive Summary
- 06** Our Experience
- 07** Summary of our experience
- 08** Catalogue of fit-out Projects
- 28** Quality Management
- 30** Our Unique Selling Point
- 31** Invitation for free workplace consultancy
- 32** Testimonials

Stud & track support for Gypsum/plasterboard drywall

ABOUT US



WWW.DOTUBIKPROJECTS.COM

Innovative Solutions, Products and Service

We provide office fit-out services in Nigeria and we have earned our clients' trust by delivering consistently high level of services in a personalised manner that extends beyond any particular project or transaction.

To deliver better quality we have recently partnered with "Planet partitioning" which has been operating since 1978 and manufactures all its components in the UK, with this relationship we are providing our clients with a partner that has the knowledge and experience to offer the right kind of guidance and advice to reach that final result that matches your vision, expectations and budget.

Regardless of whether this is about interior construction, insulated drywall technology, workplace solutions or wall finishes our customers receive all these from one source

Our professionalism and experience harmonize style and creativity, we provide:

On-site consultations

Project survey & analysis

Custom designs implementation

Purchasing, delivery, & installation

Project coordination & management.

All these are coordinated using our project planning approach to reduce risks and achieve timely delivery.

DOTRubik projects

Suite 205E, 2nd Floor, City Hall,
Catholic Mission Street,
Lagos Island, Lagos State.
Nigeria. Phone: +234 (01)291 6949
Mobile: + 234(0)818 317 9275
info@DOTRubikprojects.com

Offices

Lagos Island, Port Harcourt

Size

Employees 23

Staff

Directors 2

Registered Architects 1

Architectural Staff 3

Certified Interior Designers 1

Interior Design Staff 3

Support Staff 9

(Technical, Accounting, Human Resources,
Librarian, Marketing, Administrative)

Projects

Interiors for commercial spaces,
high-tech and traditional corporate
clients, developers and retail facilities.

ORGANIZATION EXECUTIVE SUMMARY

Since our incorporation as a Limited Liability Company In Aug 2010. We've worked on a number of projects under the supervision of renowned architects and project managers.

We are professionals in developing concepts that are client based and in fulfillment of clients dream. Our ability to produce bespoke and tailored services for our clients gives them the ability to achieve their brand goals which in turn tells the right story to their clients.

Our latest experience in the employment of synergies is used in constant development of new innovations. Because new trends by architects require new solutions in their execution.

OUR EXPERIENCE



WWW.DOTUBIKPROJECTS.COM

This remains the reason why international brands as well as local organisations trust DOTRubik to deliver. Whether we are working on small, bespoke works, or a large-scale project, our focus is on delivering high standards for construction services. Central to this is our commitment to consistency which helps us to deliver predictable outcomes for our customers, regardless of the details found in their design, project location or the sector in which they operate.

That is why both international brands and local organisations and indigenous Architects trust us to deliver their spaces on time, on quality and on budget.

DOTRubik covers detailed interior construction services including;

Restoration and refurbishment

Having created our Niche as office fit-out contractors, we have developed the skills and tools needed to provide structural and workmen safety during remodeling which includes stripping back, demolition of walls, removing sections of slabs. Our teams also undertake all temporary works as sectional demolition and reinstatement work is carried out.

Fit out

We transform empty spaces into our clients vision. Our teams have delivered bespoke interiors for some of the world's most successful and well known organisations in their respective fields . Working with their consultants, or interpreting their brief to deliver a design and build project, our collaborative approach has resulted in well used workplaces matching same standards found in their offices across the world.

We have the ability to carry out construction works in already occupied workplaces, thus permitting our client temporary work areas which would cost them less money and avoid wasted work hours.

Our customers include owners, developers, and commercial occupiers in all sectors. The following pages demonstrate some of our experience across a number of projects that vary by size and sector.

SUMMARY OF EXPERIENCE:

LIST OF INTERIOR DESIGN PROJECTS

WWW.DOTUBIKPROJECTS.COM

SELECTED OFFICE FIT-OUTS

- Travelbeta.com Office–Waterfront House, Admiralty way, Lekki Lagos. **3,000 sq ft**
- Clarke Energy Office Ikeja, Lagos. **5,200 sq ft**
- EMC2 information systems, at Sapetro Towers, Victoria Island, Lagos. **4,305 sq ft**
- Hewllet Packard (HP) Nigeria Office at Mulliner Towers, Ikoyi Lagos **3,400 sq ft**
- Nokia West Africa, Office, Ecobank Building Lagos **3,767 sq ft**
- Kings Court Towers, Keystone crescent, V-Island Lagos **9,700 sq ft**
- Bloomfield Advocates and Solicitors, at Parkview, Ikoyi **6,695 sq ft**
- Brade consulting Ltd , Ikoyi Lagos **3,000 sq ft**
- Novartis Pharma services Ltd, Mansard place V-Island Lagos **6,900 sq ft**
- Cross river state Idea Software incubation Centre. Tinapa, Calabar **2,790 sq ft**
- London Metropolitan University Office Foreshore towers, Ikoyi, Lagos. . **645 sq ft**
- Laurus development Partners(actis parteners) at Oniru, Lagos. **740 sq ft**
- Secure and trusted Alliance services office Ikeja, Lagos. **1,290 sq ft**
- Probitas Partners, Yaba, Lagos. **1,290 sq ft**
- Skye Bank plc, Adeola Hopewell, Victoria Island, Lagos. **2,380 sq ft**

CONSTRUCTION, RESTORATION & REFURBISHMENT

- Bloomfield Advocates and Solicitors, at Akoka, Yaba. Lagos.
- Pennisula Integrated power plant project, at Lekki Lagos
- Mr. Austin Ogunyolemi Akinola at Fortright Garden estate, Lagos Ibadan expressway.
- Dr. Adedayo Obebe at Bola Village, Akinyele L.G.A,Oyo State.
- Dr. Adedayo Obebe in Akure, Ondo State.
- Prvate Family project at Olaniyi str, New Oko-Oba Lagos.
- Mr. Oyegade in Lekki Phase 1, Lekki, Lagos.
- Golf simulator proposal for the Guinness sports bar at Ikoyi Club Golf section, Lagos.

TRAVELBETA.COM

CATALOGUE OF FIT-OUT PROJECTS

WWW.DOTUBIKPROJECTS.COM

Client Details

Travelbeta.com is a business leader in online travel reservation and vacation bookings, they provide very competitive prices for different travel destinations and a customer service that is second to none in the industry. Every day their skilled booking agents help thousands of internet users book flights directly from their smartphones.

Point of Note

Travelbeta has launched this new branch from their group of companies. Their new offices provides them with 4,800 sq ft of space on the 2nd floor of the Waterfront building (Admiralty rd, Lekki 1).

The central working environment consists of open-plan workspace and is supported by a large tea-point/breakout area to give Travelbeta employees somewhere to relax and unwind. In addition there is a reception area with soft seating and a great waterside view, a large board room and Director's offices.

Premises

Water front House 12E Admiralty way, Lekki Phase 1
Size: 4,800 sq ft
Timescale: 6 weeks

Scope of Work

Bespoke Manifestation	Server room
Breakout and tea point facilities	Cost consultancy
Graphics installation	Outdoor signage
Partitions and doors	Space planning and design consultancy
	Board room





CHURCH
ADMINISTRATIVE
OFFICE FOR
RCCG KINGS
COURT

CATALOGUE
OF FIT-OUT
PROJECTS

WWW.DOTUBIKPROJECTS.COM

Client Details

RCCG Kings court is located in the heart of Victoria Island with its unique bible roof concept which makes it a well pronounced site from the Ikoyi-Victoria Island bridge. The offices will serve as centre for church administrative operations, counseling rooms, meeting rooms, large lecture hall, pastors offices and accounts departments all fitted out to occupy 2 floors of the 10 storey office building which has its auditorium adjoined.

Point of Note

Hosh and Dosh on behalf of the clients requested a well detailed glass partition to be fitted on the 4th and 5th floors including alignment of works to meet its 6 weeks delivery timeline which was achieved by commitment and experience in delivering same quality work in shorter times. The space also includes executive offices along with meeting rooms, boardrooms and a high specification in built components kitchen, complete with granite top and fittings.

Hosh and Dosh created a design scheme that saw the fourth floor transformed into a spectacular Reception, Boardroom and Meeting Suite, counseling rooms, pastors lounge, with the fifth floor split into several meeting and training rooms as well as a Large conference room. DOTRubik worked closely with the Project Managers and Design team, who at the time were carrying out Category A works to all floors, to ensure the Category B fit-out runs as smoothly as possible.

Hosh and Dosh expressed requested partitions with integral venetian blinds to control privacy in the church counseling rooms which was achieved and the other glass partitions were fitted with bespoke glass manifestation.



Premises

Kings Court Towers,
Keystone crescent , V-Island Lagos.

Size

9,700 sq ft

Timescale

6 Weeks

Scope of Work

Bespoke Kitchen

Toilet cubicles

Furniture consultancy

Partitions and doors

Glass manifestation

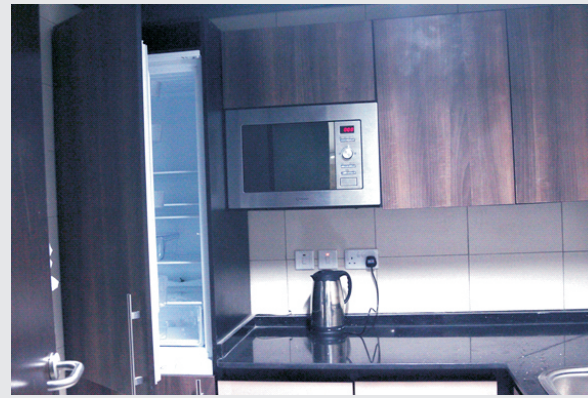
Bespoke Studio Desk

Bespoke Bookstore

Private counseling rooms

Project management

Space planning and design consultancy



OFFICE RELOCATION
PROJECT COMPLETED
FOR BLOOMFIELD
ADVOCATES
AND SOLICITORS

CATALOGUE OF FIT-OUT PROJECTS

WWW.DOTUBIKPROJECTS.COM

Client Details

DOTRubik Projects Ltd have completed an office relocation project for Bloomfield Advocates & Solicitors.

Bloomfield Advocates & Solicitors a Business Law firm with a wide range of corporate legal services and have been operational for 7 years. Bloomfield is one of Nigerias foremost immigration law specialist with other areas of expertise such as Corporate Employment Law, Litigation and Alternative Dispute Resolution, Energy and Natural Resources, Immigration, Intellectual Property, Corporate Crime and Shipping and Aviation.

DOTRubik Projects Ltd worked with Bloomfield Advocates & Solicitors to help relocate them from their old offices in Yaba to new premises at the Bloomfield Building in Parkview. We were contracted to fit-out the two floor building.

Our workplace design scheme included a reception area, large board room, meeting room, separate offices for each department, a waiting lounge, 3 offices for partners and a communal tea-point.

This project was the third office design scheme DOTRubik have completed in Parkview.

Details found in design

The design vision for the new office for Bloomfield takes on the characteristics of an open work environment with a lot of natural lighting achieved by the use of glass partitions blended with modern aesthetic to form a simple, timeless environment with flawless detailing. The restrained mix of rich materials were carefully selected to have a granite entrance that steps into the wooden floor in reception and then into the interface floor carpet for better acoustics in the meeting room, board room and Client Lounge.



Found on the ground floor is the Client lounge; a hub for engagement with the business. This space will be a hive of activity with the highest levels of personal service that transcends what competitors may provide. The large boardroom also located beside the lounge is well decorated and stylishly finished. The 1st floor holds the associates' office, library and the Partner's offices, its location and proximity to key members of staff will enable best use of the Partner's valuable time.

There is a staff breakout area located on the ground level. This space will be enjoyed by all staff and in a multi-functional building provides a common space to meet and greet.

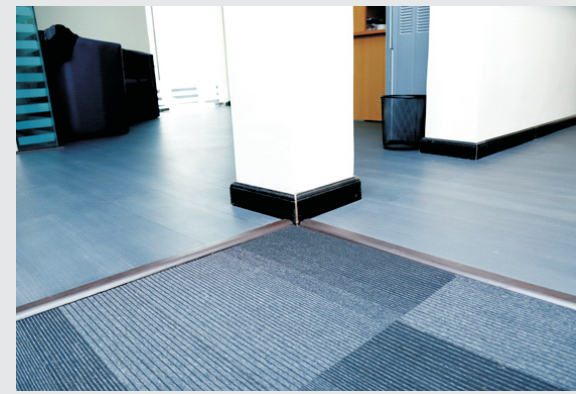
Premises

15 Agodogba Street,
Parkview Estate Ikoyi, Lagos.
Size 6695 sq.ft
Timescale 6 weeks

Scope of Work

Space planning
Feasibility report on vacant building
Cost consultancy
Design consultancy
Bespoke furniture
Planet Partition installation
Suspended ceiling
Intercom/LAN networking
Audio visuals
AC supplies

Bespoke reception desk
Wooden floor installation
Feature wall
Interface carpet
Decoration
Client lounge
Relocation logistics
Project management



CITY OFFICE
PROJECT
FOR DOTRUBIK
PROJECTS

CATALOGUE OF FIT-OUT PROJECTS

WWW.DOTRUBIKPROJECTS.COM

Client Details

DOTRubik Projects Ltd has recently completed a unique personal office fit out project for its city office located in the heart of business activities in Lagos Nigeria.

The office space is located in the newly renovated City Hall building of Lagos which was commissioned in 1968.

We created a high specification workplace with an outstanding design scheme, including an exceptional Reception and Boardroom area, wooden floor and partitions using Glass and Gypsum boards. The remainder of the space includes 2 executive offices and open plan work areas.

Having already carried out similar projects we were able to bring in several elements we will like our prospective clients to see within the space. The automatic roller blinds, bespoke furniture, incomplete solid partition to show components (stud & track), victorian wall designs e.t.c.

Premises

City Hall, Catholic Mission street Lagos

Size

430 sq ft

Timescale

4 Weeks

Scope of Work

Bespoke Reception Desk

Data cabling

Feature wall

Interface carpet floor

Partitioning Bespoke office furniture

Automatic roller blinds

Decoration

Glass Frosting

Wall Graphics

Project management

Space planning and design





CATALOGUE OF FIT-OUT PROJECTS

ROLE: PROJECT ARCHITECTS CLIENT: CLARKE ENERGY

This project includes base building alterations, hard and soft fit out.

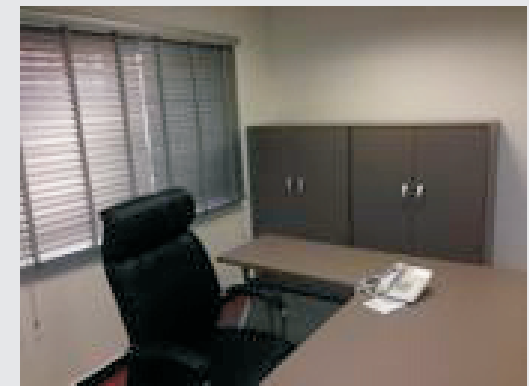
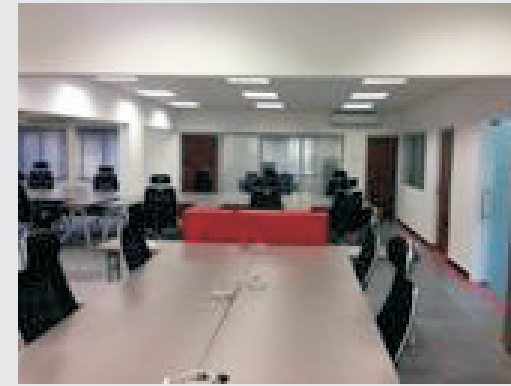
A completely remodeled commercial office space is now home to Clarke energy - a distributor and service provider of Gas engines in Nigeria . This is a stunning and modern office environment.

The design and remodeling of existing offices, meeting room, service dept, board room and the installation of double glazed partitioning with blinds for vision control.

Project Duration: 3 months.

Project Management: DOTRubik projects.

Completed: December 2013



CATALOGUE OF FIT-OUT PROJECTS

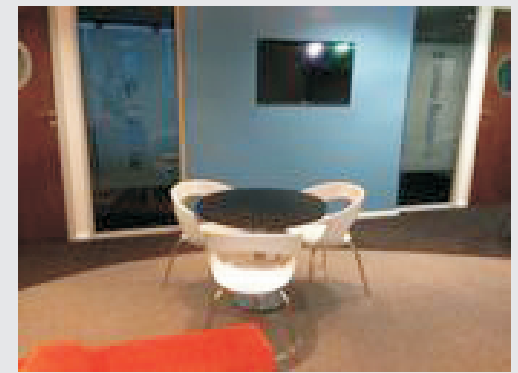
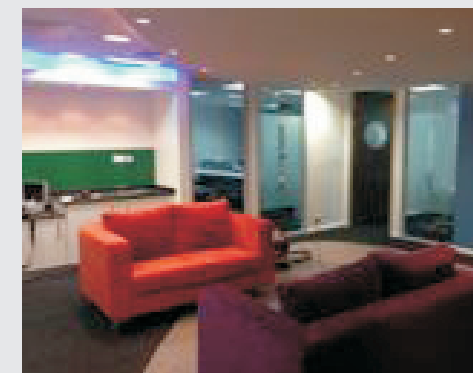
ROLE: PROJECT ARCHITECTS CLIENT: EMC2 INFORMATION SYSTEMS

This project was for a complete Office fit-out. The construction of offices & meeting rooms acoustically insulated using rockwool, The installation of an elliptical POP ceiling above elliptical floor carpet design in reception.

Project duration: 4 months.

Project Management: DOTRubik Projects.

Completed: September 2013



CATALOGUE OF FIT-OUT PROJECTS

WWW.DOTUBIKPROJECTS.COM

ROLE: PROJECT ARCHITECTS CLIENT: IDEA NIGERIA - (SOFTWARE INCUBATION CENTRE) CALABAR

This project was for Software incubation center located at the Tinapa knowledge City, Tinapa. The construction of 5 offices & training rooms acoustically insulated using rockwool, the installation of data and voice, ceiling, supply of furniture, door signs and Logo in the reception.

Project duration: 3 months.

Project Management: DOTRubik projects.

Completed: April 2013



CATALOGUE OF FIT-OUT PROJECTS

WWW.DOTUBIKPROJECTS.COM

ROLE: PROJECT ARCHITECTS CLIENT: (HEWLETT PACKARD NIGERIA)

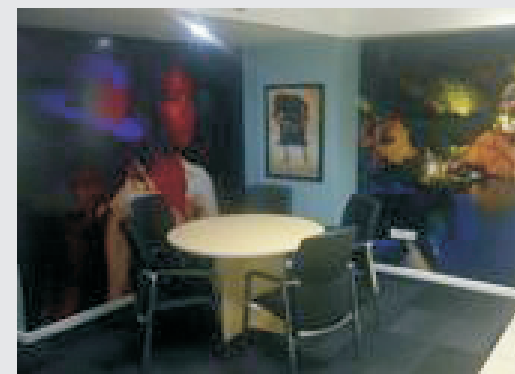
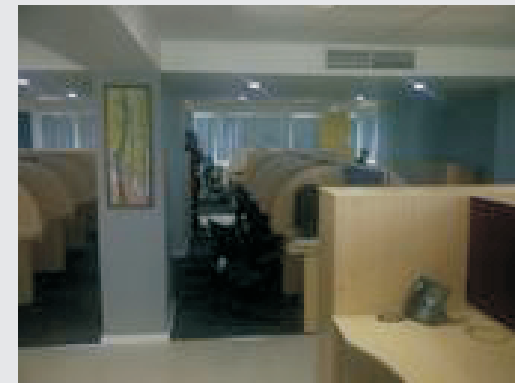
Project Architect over office partitioning project for Hewlett Packard (HP) Nigeria Office at Mulliner Towers, Ikoyi Lagos. Subcontractor contract compliance and timely delivery of office fit out and furniture, relocation arrangements were also provided from Octagon Building in Victoria Island.

Lighting and creative manifestations, company logos and corporate colours all added style and panache to the final design.

Project duration: 4 months.

Project Management: B-dek Associates Ltd

Completed: February 2012



CATALOGUE OF FIT-OUT PROJECTS

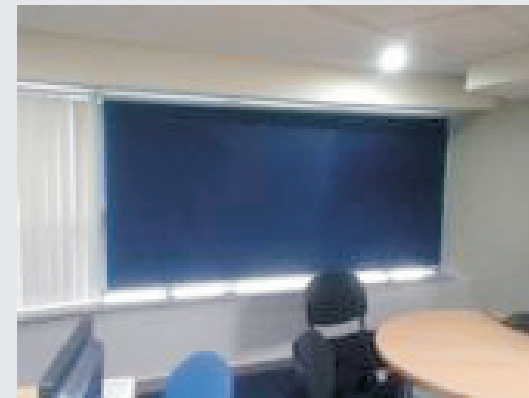
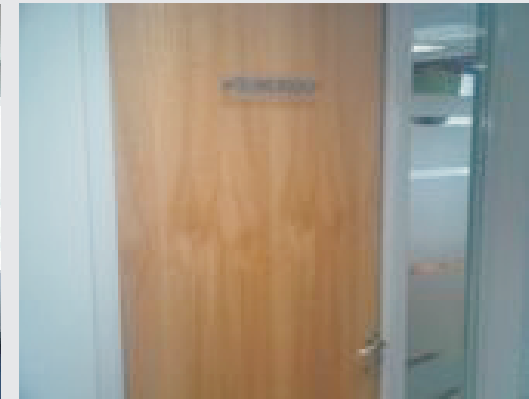
ROLE: PROJECT ARCHITECTS CLIENT: NOKIA (WEST - AFRICA)

Project Architect over the interior redesign Nokia West Africa, Office, Ecobank Building Lagos and the 3D representations of the spaces, ensuring a timely delivery of the 50 staff office, furniture and conferencing equipment. As part of the design brief it was important that the office provided flexible and progressive working with open plan spaces, breakout areas and an extensive and wide variety of meeting spaces.

Project duration: 4 months

Project Management: Source 8 UK.

Completed: April 2011



CATALOGUE OF FIT-OUT PROJECTS

WWW.DOTUBIKPROJECTS.COM

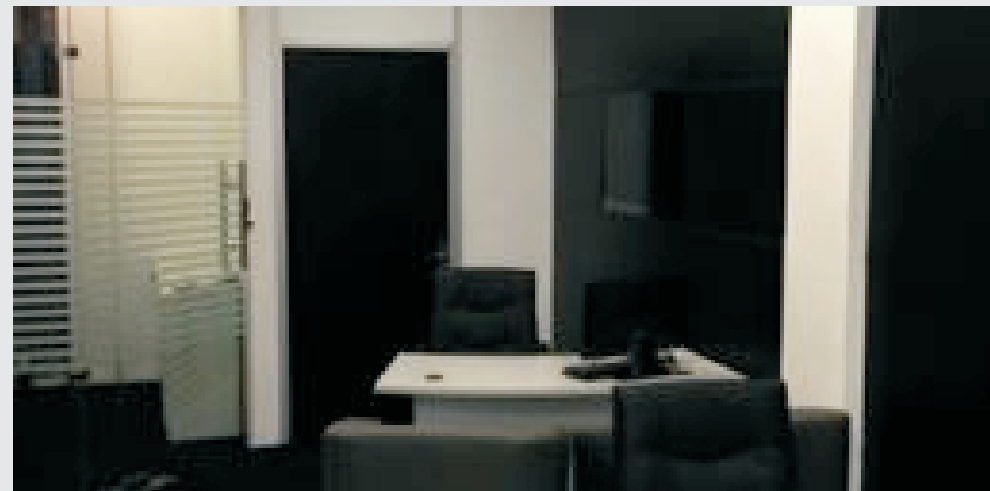
ROLE: PROJECT ARCHITECTS
CLIENT: THE FIRST GROUP (TFG)

This is a total Shop fit-out involving production of Custom made furniture and installation of Toughened 10mm glass with Strips of manifestation, Storage space and office for 6 staff, the shop is located at the palms shopping mall, Lekki, Lagos. The time scales for fit out, and furniture deliveries were short, relying on exceptional capabilities to ensure smooth and assured project management.

Project duration: 4 months.

Project Management: DOTRubik Projects.

Completed: August 2012



CATALOGUE OF FIT-OUT PROJECTS

ROLE: PROJECT ARCHITECTS CLIENT: LONDON METROPOLITAN UNIVERSITY OFFICE

The project included Office Design, Office fit out works, Office Relocation, Furniture Installation and Carpet.

The office serves as the administrative office for London Metropolitan University in Nigeria.

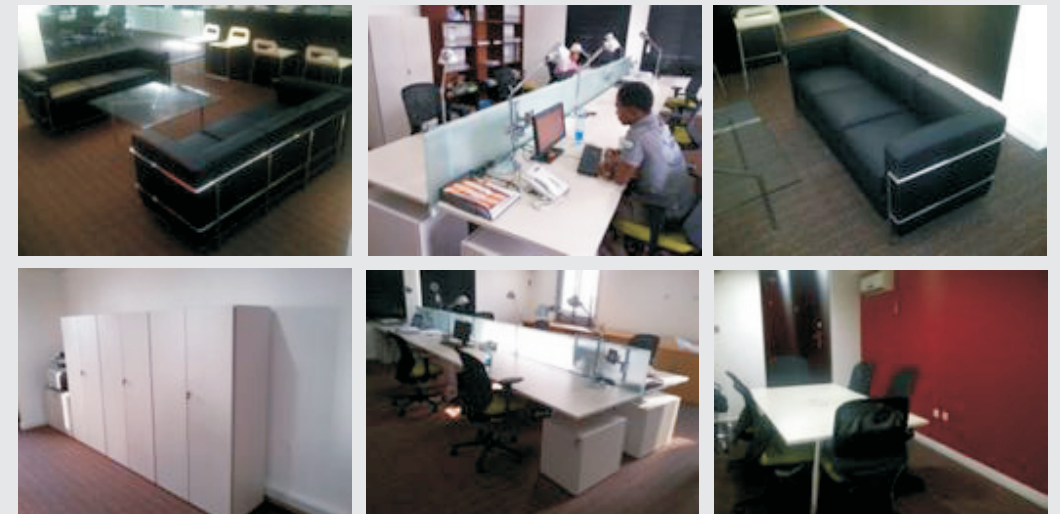
Project duration: 6 weeks
Project Management: DOTRubik Projects Ltd
Completed: Sept 2011



ROLE: PROJECT ARCHITECTS CLIENT: LAURUS DEVELOPMENT PARTNERS

This fit-out occupies the first floor of a 2-storey office complex at Oniru, Victoria Island, Lagos. We carried out space planning, fit out works and imported furniture installation supervision.

Project duration: 2 months.
Project Management: DOTRubik Projects.
Completed: March 2013



CATALOGUE OF FIT-OUT PROJECTS

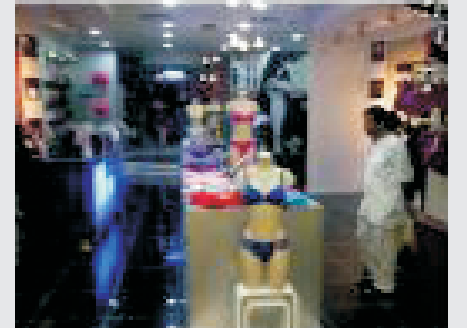
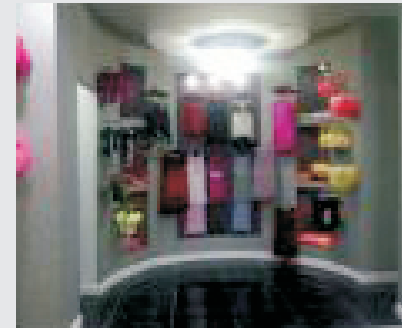
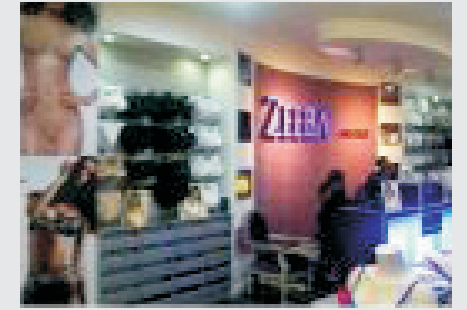
ROLE: PROJECT ARCHITECTS CLIENT: ZEEBA LINGERIE

This is a shop fit-out located at Ikeja City Mall Ikeja Lagos. I carried out Architectural design and fit out works to have 5 sections that carry 5 top lingerie designer products using a combination of purple and silver colors.

Project duration: 2 months.

Project Management: Dotrubik Projects.

Completed: January 2012



ROLE: PROJECT ARCHITECTS CLIENT: SECURE & TRUSTED ALLIANCE SERVICES

This is a complete office fit-out. Project management of space planning works on site including , partitioning and manifestation. The open plan is complemented by the 2.6m high nominal head and base track, t th space.

Project duration: 1 month.

Project Management: Dotrubik Projects.

Completed Aug 2012



CATALOGUE OF FIT-OUT PROJECTS

WWW.DOTUBIKPROJECTS.COM

ROLE: PROJECT ARCHITECTS
CLIENT: PROBITAS PARTNERS

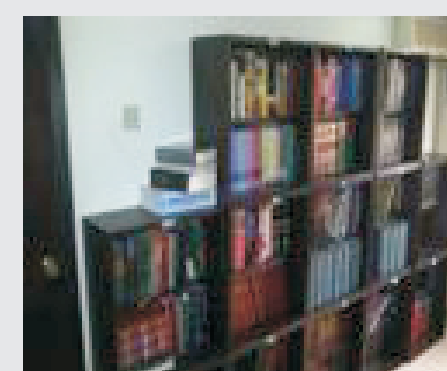
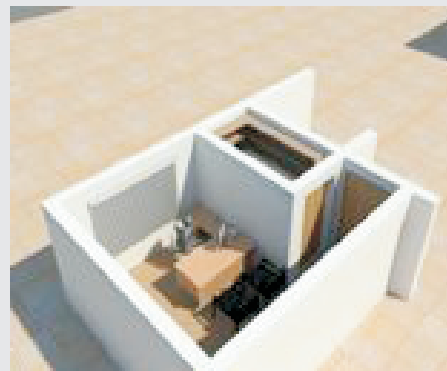
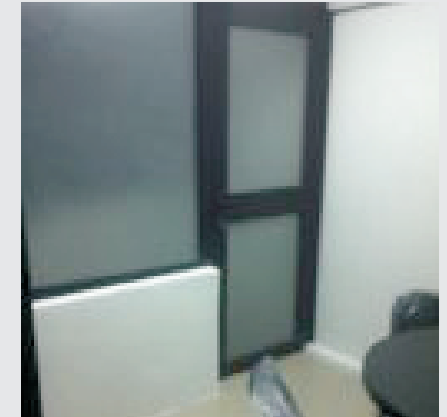
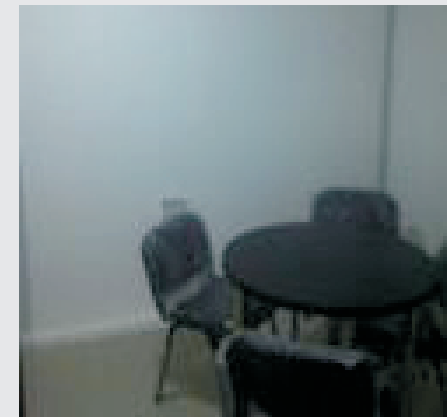
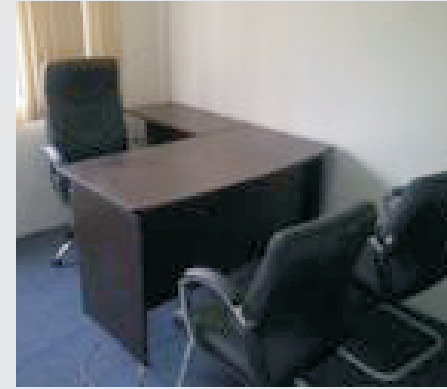
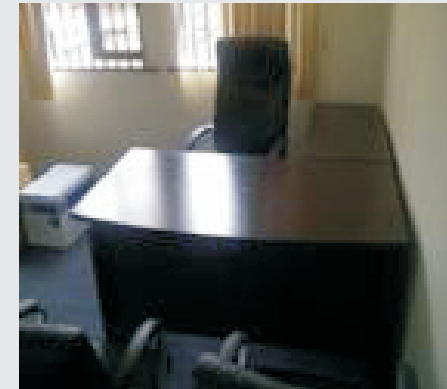
Design and upgrading of meeting room for Probitas Partners. The creation of a 4 seat meeting room, furniture installation, Tiling and hvac works.

we have the purchasing power and status to represent some quality furniture products and we supplied executive workstations and meeting room tables.

Project duration: 1 month.

Supplies and installation: DOTRubik Projects.

Completed: May 2013



CATALOGUE OF FIT-OUT PROJECTS

WWW.DOTUBIKPROJECTS.COM

ROLE: PROJECT ARCHITECTS CLIENT: CONFIDENTIAL

The client is a private investment company. This project was done with attention to details and was completed in 4 weeks providing an open plan office for investment staff, 10 seat boardroom, Directors office and a kitchenette.

Project duration: 1 month.

Supplies and installation: DOTRubik Projects.

Completed: Dec 2014



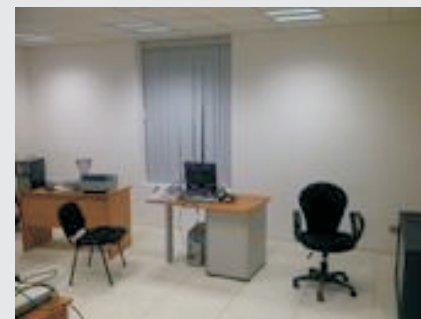
ROLE: PROJECT ARCHITECTS CLIENT: SKYE BANK

This is a Skye bank plc. foreign exchange department fit-out. We project managed works on site including Furniture, partitioning and raised floor.

Project duration: 2 months.

Project Management: Dotrubik Projects.

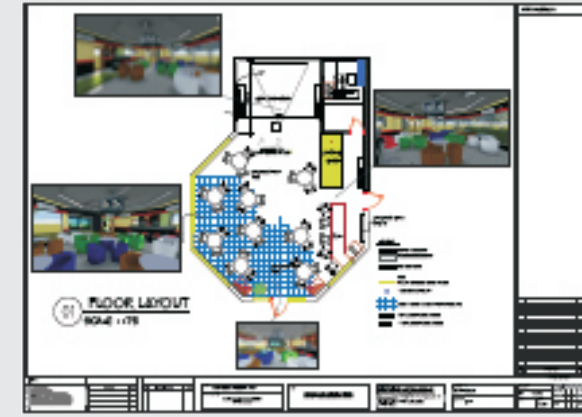
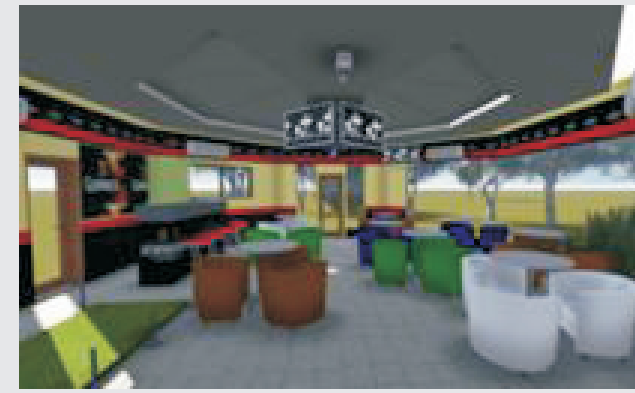
Complete: February 2013



CATALOGUE OF FIT-OUT PROJECTS

ROLE: PROJECT ARCHITECTS
CLIENT: GUINNESS NIG /
IKOYI CLUB GOLF
SECTION

Renovation presentation to Ikoyi Golf club section for renovation of its Guinness sports bar. This project will include the introduction of a Golf simulator and sports.



**QUALITY FROM
OUR OWN POINT
OF VIEW.**



WWW.DOTUBIKPROJECTS.COM

QUALITY MANAGEMENT

In our company it is the employees themselves, in all departments, who ensure the consistency high quality - The health and safety of all employees, client, personnel, and service providers shall be a principal consideration in the planning and conduct of all site and management activities and programs, and in the design, construction, modification, or renovation of all clients work.

Through our integrated management system, we also provide excellent work safety and extensive environmental protection. Because you can trust our services and products to have efficiency and quality just as much as you can trust us to deal with people and nature responsibly.

The quality assurance of our products and services is a significant aspect of our work. All the necessary controls in the individual operations and at the construction sites are carried out by our staff on site. The respective responsible parties in regular quality checks evaluate the results. If needed, we will then initiate any appropriate corrective and preventative measures. It is a reasonable and cost-saving work division – because this way everyone promotes the product that they know the best.

WE'RE BUILDING ON SAFETY

You can tell professional work from its results – and from the fact that it includes the health protection of everyone concerned. With our integrated safety system, we protect our workers from accidents and strains on their health – so that they can always move on safe ground in our work places and on our construction sites.



OUR UNIQUE SELLING POINT / BUSINESS MODEL AND STRATEGY

Having created our Niche as office fit-out contractors, we have developed the skills and tools needed to provide quality service at the right prices.

Integrity

We do what we say

Intelligence

We look beyond
the obvious

Teamwork

Everyone at Wates
plays a part

Performance

Together we go the extra
mile for our customers

Respect

We respect the people and
the offices in which we work



SPECIAL WISHES ARE WELCOMED.

We are always open to special requests. In fact – we really look forward to them, because our strength is “providing innovative solutions”.

Just ask us! We offer development and design in connection with specific project as a service too.

HERE EVERYTHING IS INTERCONNECTED.

We offer all services individually or as a customised chain of processes. Intelligently coordinated procedures guarantee precisely matching solutions and an efficient construction with a significantly smaller number of interfaces.

Consulting/Research

Here architectural ideas have no boundaries: our own designers, engineers and technicians develop new ways to make the products – exactly according to our customers' desires.

Quality Assurance

Through our integrated quality management, we guarantee regular controls and process reviews. In that way our customers always profit from the best quality.

Project Planning

We make sure that each work step is prepared carefully: with detailed plans, drawings, technical solutions, construction site logistics, scheduling and many other measures.

TESTIMONIES

“Everyone in the DOTRubik team worked hard to understand the our culture, requirements, concept, budget and programme and this resulted in realising the vision we had for our new offices.”

Mr Tosin Oyelese - COO Travelbeta

“Following a lengthy construction process with several revisions to building textures and finishes, I was introduced to DOTRubik and after meeting them we visited their recently completed fit-out at Church gate V-Island. My initial worries of engaging a company I knew nothing about were quickly forgotten as DOTRubik listened to us, made themselves available immediately the space was available for them to begin construction. DOTRubik produced an excellent result on time and on budget – a job very well done!”

**Mrs Oshinusi - Client Representative
for RCCG Kings court**

“The Construction Team were amazing throughout the whole project, proactive, efficient and very professional. Attention to detail was there, great communication all the way and our requests, big or small all were dealt with very effectively.”

**Mr Sotunde - Project Manager Savant
integrated concepts Ltd**

“Everyone in the DOTRubik team worked hard to understand the our culture, requirements, concept, budget and programme and this resulted in realising the vision we had for our new offices.”

Mr Tosin Oyelese – MD Altheus Ltd

“DOTRubik had clearly gone to great lengths to ensure that their design made the most of the location of the office and our requirements. However, it was in their selection of fixtures and fittings where the DOTRubik team excelled”

**Barrister Kunle Obebe - Partner Bloomfield
Advocates**

“On the Monday morning when we moved in, every area was being used, which shows we got it right.”

**Dayo Adu - Head Employment Law Bloomfield
Advocates**

We are looking forward to seeing you!

This brochure has shown you the different areas of our company. If you would like to know more, please feel free to stop by: we look forward to it. Our doors are always open to you – all you need to do is book an appointment.

DOTRubik projects

Suite 205E, 2nd Floor, City Hall, Catholic Mission Street,
Lagos Island, Lagos State. Nigeria.

Phone: +234 (01)291 6949

Mobile: + 234(0)818 317 9275

info@DOTRubikprojects.com



WWW.DOTUBIKPROJECTS.COM